



Queen's University
Belfast

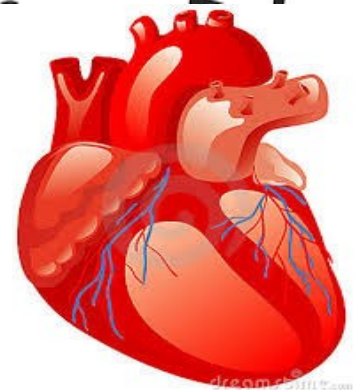
SCHOOL OF
Psychology



Understanding how people control their emotions and how this affects their behaviour

- We are looking for people to take part in a scientific research study
- We want to understand more about why some people have problems with behaviours like tempers, aggression, and anxiety
- We are looking for people:
 - with a neurodevelopmental disorder
 - who understand that e.g. £100 is more than £10

Please let us know if you are interested and would like



Kate Woodcock

028 9887 4886

k.woodcock@qub.ac.u